

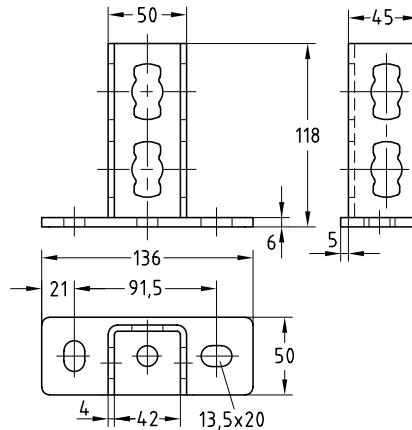
MPR-Saddle support crosswise type S+ galvanised

Field of application

- Simple assembly of strong cross-beams using MPR-Support channels
- Applicable for cramped installation conditions in shafts and ducts
- For indoor use

Advantages

- Easily connected with the MPR-Support channels due to installation with the MPR-Connection lock type S+
- Good load transfer due to the high bending stiffness of the saddle connection
- Ideal connecting element for channel constructions especially of support channels 41/41
- Elongated- and cross-holes for direct attachment to the building structure



| For support channels | Part no. | Sales unit | Pack unit |
|----------------------|----------|------------|-----------|
| 41/21-41/124 | 165825 | 10 | pieces |